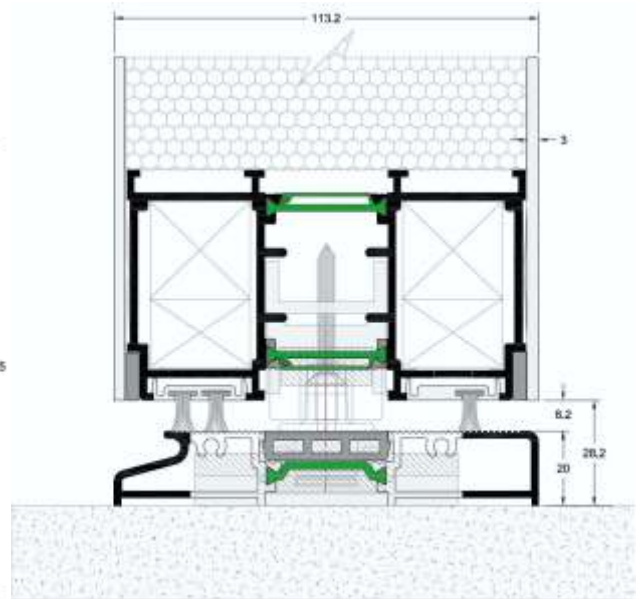
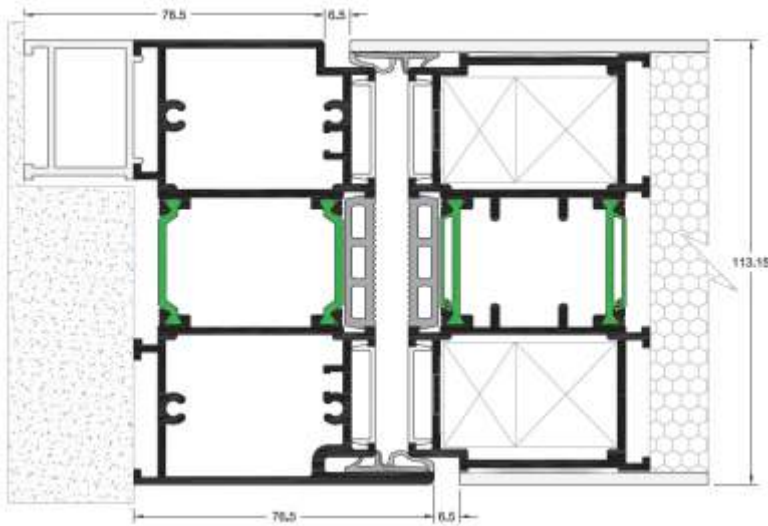




**Superior**  
Pivot 

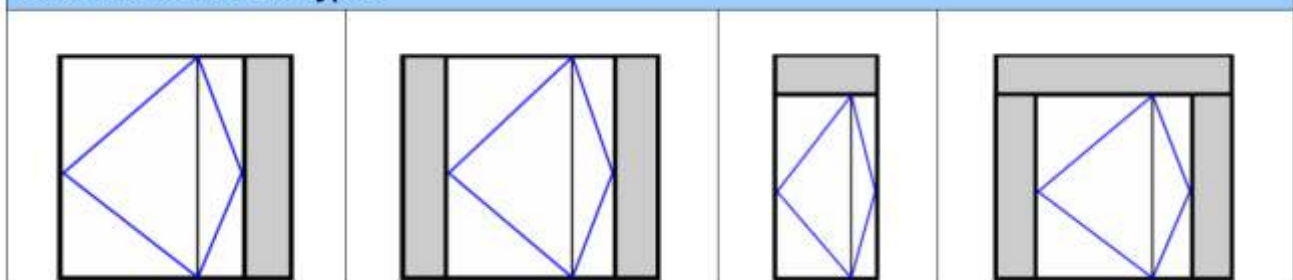
2024

## Profile Sections



Basic Dimensions			
Type : Single Door	Width	Height	
	Up to 140 cm	Up to 250 cm	
	141 to 160 cm	Up to 250 cm	
	161 to 180 cm	Up to 250 cm	
	181 to 200 cm	Up to 250 cm	
	Width	Height	
	Up to 140 cm	251 to 300 cm	
	141 to 160 cm	251 to 300 cm	
	161 to 180 cm	251 to 300 cm	
	181 to 200 cm	251 to 300 cm	
	<b>MINIMUM DIMENSIONS : W 140 x H 220 cm – MAXIMUM DIMENSIONS : W 200 x H 300 cm</b>		

### Other available door types



## Standard Configuration



Colors Ral Mat, Futura, Strucruta και Sahara

Number	19-001547-PR02 (NW-C01-05-en-01)
Owner	UNION PROFILE L.KIFISOU 44, ATHENS
Product	Burglar resistant external pedestrian doorset
Designation	System: Superior PIVOT Shipping name: Superior PIVOT
Details	Manufacturer: TEHNI A.E., - Xanthi; Material: Aluminium system with thermal break; Attack side: Closing face as per EN 12519; Number of casements: 1; Overall dimensions (W x H): 1500 x 2500; Lock: Manufacturer: Aug. Winkhaus GmbH & Co. KG, - Telgte; Designation: STV-2460/L45-92/M4-WINK HAUS; Note: Class 3 according to DIN 18251; Profile cylinder: Note: Digit 7 class 4 and digit 8 class 1 according to EN 1303; Integrated safety shield: Note: Inserted drill protection plate 60 HRC with the dimensions and tolerances according to DIN 18257 and a guide of the profile cylinder for 7 mm length; Hinge: Manufacturer: GEZE GmbH, - Leonberg; Designation: Pivot door hinge set- GEZE TS; Number 2; Air gap restrictor: 1

Special features

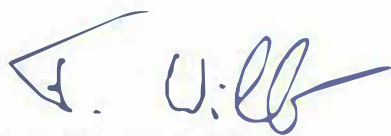
Result

Burglary resistance according to EN 1627:2011-05



**Class: RC 3**

ift Rosenheim  
15.10.2019



Florian Willer, Dipl.-Ing. (FH)  
Head of Testing Department  
Security/Safety Testing



David Wolf  
Operating Testing Officer  
Security/Safety Testing

Basis \*)

EN 1627:2011-05

\*) and corresponding national versions (e.g. DIN EN)

Test report: 19-001547-PR02 PB-C01-05-en-01

Representation



Instructions for use

The results obtained apply to the field of extended application as set out in EN 1627, Annex D.

Validity

There is no time limit. When using this document the up-to-dateness of above basis and the conformity of the product have to be observed.

Notes on publication

The ift-Guidance Sheet "Conditions and Guidance for the Use of ift Test Documents" applies.

Identity-Check



[www.ift-rosenheim.de/ift-geprueft](http://www.ift-rosenheim.de/ift-geprueft)  
ID: 047-9266B



# Evidence of Performance

## Calculation of thermal transmittance

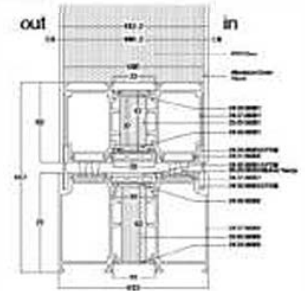


Test Report  
No. 19-001547-PR05  
(PB-C01-06-en-01)

Client	UNION PROFILE L.KIFISOU 44, ATHENS
Product	Single leaf aluminium-door with panel
Designation	Superior PIVOT
Performance-relevant product details	Dimensions (B x H) in mm 2000 x 3000; Opening direction inwards; Profiles; Material Aluminium alloy - painted - powder coated; Projected width from - to 90 mm - 147 mm; Structural depth 113 mm; Thermal break; Material Polyamide 6.6 with 25 % glass fibre (PA 66 GF25); Surface treatment untreated (threshold: powder coated); Casement; Designation 24-77-00001; Thickness of infill 112.2 mm; Edge cover of infill 0 mm; Inlay material User specific - "FIBRANxps FABRIC"; Frame; Designation 24-77-00003 / 24-77-00005; Inlay material User specific - "FIBRANxps FABRIC"; Threshold; Designation 24-77-00002; Panel; Thickness 112.2 mm; Construction in mm 3/106.2/3; Face Layer; Material Aluminium alloy - painted - powder coated; Inlay; Material User specific - "FIBRANxps FABRIC"; Thermal conductivity in W/(mK) 0.034
Special features	Casement overlapping panel inside and outside.

Basis 1)  
EN ISO 10077-1:2017-07  
ift test report 19-001547-PR03  
(PB-K20-06-en-01)  
\*) Corresponds to the national standard(s) for DIN EN)

Representation  
Cross section of the profile, casement frame on left



Further drawings see annex.

### Instructions for use

The results obtained can be used as evidence in accordance with the above basis.

### Validity

The data and results given relate solely to the tested and described specimen. This test does not allow any statement to be made on further characteristics of the present structure regarding performance and quality, in particular the effects of weathering and ageing.

### Notes on publication

The ift-Guidance Sheet "Conditions and Guidance for the Use of ift Test Documents" applies. The cover sheet can be used as abstract.

### Contents

The report contains a total of 5 page/s and annexes (3 pages).

### Results

Calculation of thermal transmittance according to  
EN ISO 10077-1:2017-07



$$U_d = 0.76 \text{ W/(m}^2\text{K)}$$

ift Rosenheim  
17.06.2019

Konrad Huber, Dipl.-Ing. (FH)  
Head of Testing Department  
Building Physics

Till Stübgen, Dipl.-Ing. (FH)  
Operating Testing Officer  
Building Physics

Number	19-001547-PR06 (NW-C01-02-en-01)
Owner	UNION PROFILE L.KIFISOU 44, ATHENS
Product	External pedestrian doorset
Designation	Shipping name: Superior PIVOT
Details	Material: Aluminium system with thermal break; Overall dimensions (W x H) 1500 x 2500 ; Closing condition closed and locked; Threshold: Designation 24-77-00002; System Superior PIVOT; Material: Aluminium system with thermal break; Lock: Designation STV-2460/L45-92/M4
Special features	-/-

### Result

Air permeability according to EN 12207:2016-12



**Class: 3**

Resistance to wind load according to EN 12210:2016-03



**Class: C3/B3**

Watertightness according to EN 12208:1999-11



**Class: 1A**

### Basis \*)

EN 14351-1:2006+A2:2016-09  
\*) and corresponding national versions  
ref. DIN EN1

Test report: 19-001547-PR06 PB-  
CD1-02-en-01

### Representation



### Instructions for use

The Evidence ("Nachweis") can be used for preparing the Declaration of Performance in accordance with the Construction Products Regulation 305/2011/EU. The results obtained apply to the direct field of application determined in Annex E of EN 14351-1.

### Validity

There is no time limit. When using this document the up-to-dateness of above basis and the conformity of the product have to be observed.

### Notes on publication

The ift-Guidance Sheet "Conditions and Guidance for the Use of ift Test Documents" applies.

ift Rosenheim  
12.04.2019



Thomas Stefan, Dipl.-Ing. (FH)  
Head of Testing Department  
Building Component Testing



Dimitrios Moustakidis, MSc. Dipl.-Ing.  
Operating Testing Officer  
Building Component Testing

### Identity-Check



[www.ift-rosenheim.de/ift-portal/](http://www.ift-rosenheim.de/ift-portal/)  
ID: EFG-E043E